

HONDA



CIVIC  
e:HEV Full Hybrid



# A joy to drive



Honda Civic

Model shown throughout the brochure is the Honda Civic 2.0 i-MMD Hybrid Advance in Platinum White Pearl. For more information on grades and features, please refer to the grade and specification pages.



# Your Civic

06	Full hybrid
12	Performance
18	Exterior design
24	Interior design
30	Technology
38	Safety
44	Choose your Civic







Full hybrid  
benefits



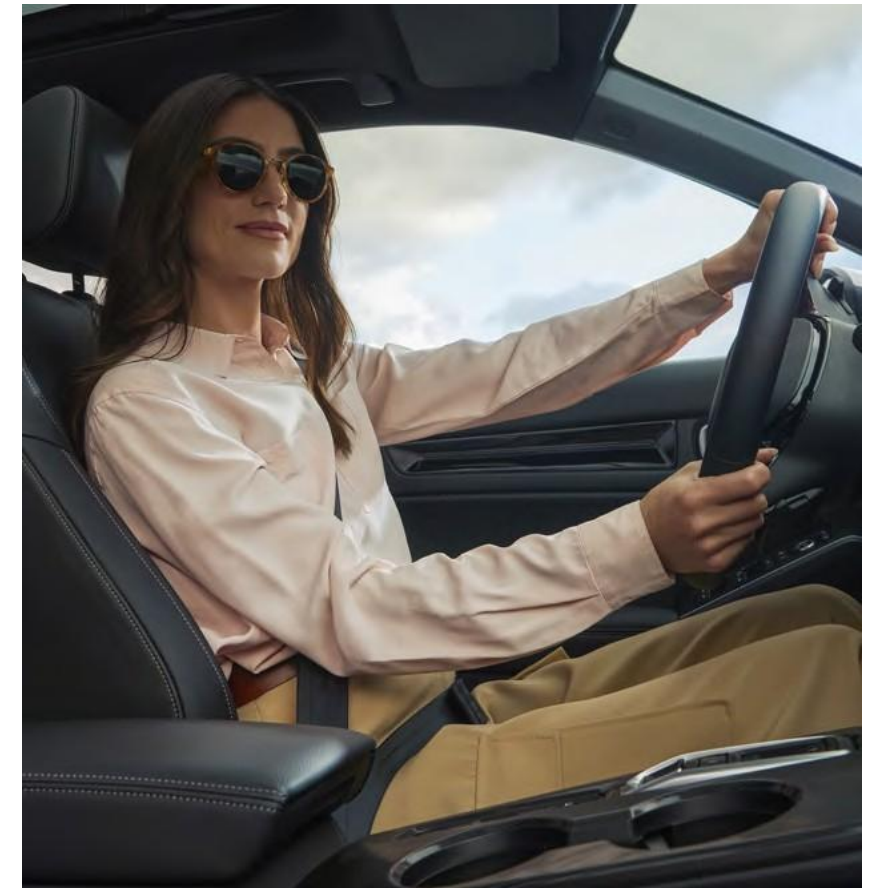
# Advanced power and **efficiency**

Born from over 25 years of advanced Honda hybrid technology, the Civic is the perfect blend of engine and electric power, offering both performance and efficiency, with no compromise to sheer driving pleasure.

And because Civic is a full hybrid, unlike a mild hybrid, it can run solely on electric power - with instant acceleration from a standstill, just like an electric vehicle.

**LOW CO2 EMISSIONS\***  
113G/KM

**HIGH ECONOMY\***  
5.0L /100KM







# Hybrid Power

The Civic is self-charging; using a combination of two electric motors, a petrol engine and a regenerative braking system to top-up the EV battery on the go with no need to plug-in.

Honda's advanced e:HEV powertrain has three autonomous drive systems that deliver performance and economy:

- **Electric drive** for silent, instant power
- **Hybrid drive** for sporty responsiveness and long range potential
- **Engine drive** for sustained, higher speed cruising

**NO NEED TO PLUG IN**  
**SELF-CHARGING FULL HYBRID**

**POWERTRAIN WARRANTY**  
**5-YEAR/100,000KM**





Performance



# Designed to be driven

Civic's sporty chassis gives you agile, sure handling and responsiveness. Its full hybrid powertrain, maximum torque of 315Nm and maximum power of 184PS\*, deliver the performance you need, when you need it.

Adjust your drive with 4 selectable modes to suit your driving style and mood.

- **Normal** balances power with efficiency
- **Sport** boosts acceleration and responsiveness
- **Econ** increases fuel efficiency
- **Individual** adjusts powertrain and steering settings to suit your preferences

**315NM**  
MAX ELECTRIC MOTOR TORQUE

**0-100 KM/H**  
**7.9 SECONDS**

\*Electric motor







# Performance you can feel

The Civic's design focuses on both enjoyment and confidence behind the wheel, placing driver comfort and a high standard of quality at the forefront.

Vibrations from the road surface are smoothed out comprehensively, while the body-stabilising front seats and intuitive controls create a seamless connection between you, the car, and the road.







Sleek and  
sporty



- Sporty stance
- Keyless entry
- Privacy glass
- Sleek fastback profile







△ **STYLISH HONEYCOMB DESIGN**  
BUMPER AND GRILLE

**LED HEADLIGHTS**  
WITH ADAPTIVE DRIVING BEAM\*

**18" ALLOY WHEELS**  
AS STANDARD ▷

\*See specifications for feature availability \*\* VDA method, seats down load to roof



◁ **SPACIOUS BOOT**  
UP TO 1220L MAX CAPACITY  
WITH SEATS DOWN\*\*



**PANORAMIC**  
▽ OPENING GLASS ROOF\*







Interior  
design





Soft touch materials  
Combi leather upholstery\*  
Ambient door lighting\*

\* See specifications for feature availability





△ **ERGONOMIC**  
BODY STABILISING  
FRONT SEATS



△ **MULTIFUNCTIONAL HEATED**  
STEERING WHEEL

\* See specifications for feature availability

# Space, luxury, comfort

▽ **SEAMLESS DESIGN**  
INSTRUMENT PANEL



△ **HONEYCOMB VENTS**  
WITH STYLISH CONTROLS

△ **USB PORTS**  
FRONT AND REAR





Cutting edge  
technology





9" Honda CONNECT  
touchscreen

Android Auto and  
wireless Apple CarPlay®

Dual zone climate controls

Digital driver's display



# Equipment highlights



ELECTRIC SEAT  
ADJUSTMENT\*



REAR VIEW  
CAMERA



WIRELESS  
CHARGING

BOSE SPEAKERS  
PREMIUM AUDIO\*

\* See specifications for feature availability





Safety





Honda  
**SENSING**



# Keeping everyone safe

Cocooned in the safety of 11 airbags and our most advanced active and passive safety features as standard, the Civic is a safe place to be on the road.

With Honda **SENSING** as standard, the Civic is equipped with Adaptive Cruise Control, Lane Keeping Assist System and a host of other features that can warn you to the presence of people nearby, alert you to traffic crossing your path, and to blind spots before you start to overtake.





# Honda SENSING

Our safety system gives you all-round peace of mind. For a full list of safety features please refer to the specification pages on the Honda website.

- **Collision Mitigation Braking System**  
Applies brakes automatically if a frontal collision is imminent.
- **Road Departure Mitigation System**  
If your car begins to drift out of lane or the road, tactile and audible warnings are delivered, and automatic steering is applied to correct the car.
- **Cross Traffic Monitor**  
Reverse safely when your view is obstructed, with warnings of approaching cars and other moving objects.
- **Lane Keeping Assist System**  
Keeps you central in your lane with gentle automatic adjustments to the steering wheel.
- **Adaptive Cruise Control**  
Helps maintain a constant speed and a set safe distance from any car in front by assisting with accelerating and braking.





Choose  
your Civic





# Civic Sport

**Infotainment**

- 9" Honda CONNECT touchscreen
- Navigation, AM / FM / DAB,
- Smart phone connectivity with Apple CarPlay® and Android Auto
- Bluetooth™ hands free telephone
- Multifunctional steering wheel controls

**Exterior**

- Eight speakers audio system
- Smart entry and start
- 18" gloss black alloy wheels
- Privacy glass
- Electric windows, front and rear
- Electric heated door mirrors
- Auto LED lights
- Auto wiper with water saving feature
- Front and rear parking sensors
- Black door mirror caps

**Interior**

- 10.2" digital drivers display
- Four driving modes
- Dual-zone auto climate control
- Wireless charging
- Auto dimming rear view mirror
- Combi leather and fabric upholstery
- Sports pedals
- Air conditioning - rear vent
- Heated leather steering wheel

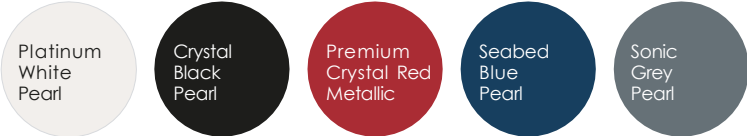
- Heated front seats
- Driver seat manual height adjustment
- Driver lumbar support powered
- Fabric upholstery
- Electric windows (front and rear)
- Parcel cover

**Connectivity**

- My Honda+ app

**Driver's Assistance**

- Honda SENSING
- Adaptive Cruise Control
- Driver alert systems
- Auto hold function
- Lane Keeping Assist System
- Traffic Jam Assist
- Parking sensors, front and rear
- Rear view camera
- High beam support system







# Civic Advance

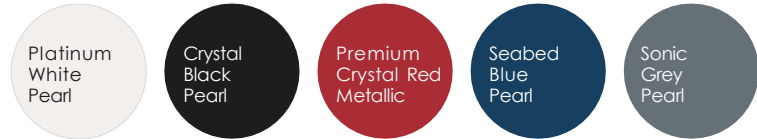
In addition to all the features available in Sport grades, Advance enhances driving pleasure with:

**Interior**

- Premium audio with 12 Bose speakers
- Leather upholstery
- Power front seats
- Passenger lumbar support - powered
- Ambient lighting

**Exterior**

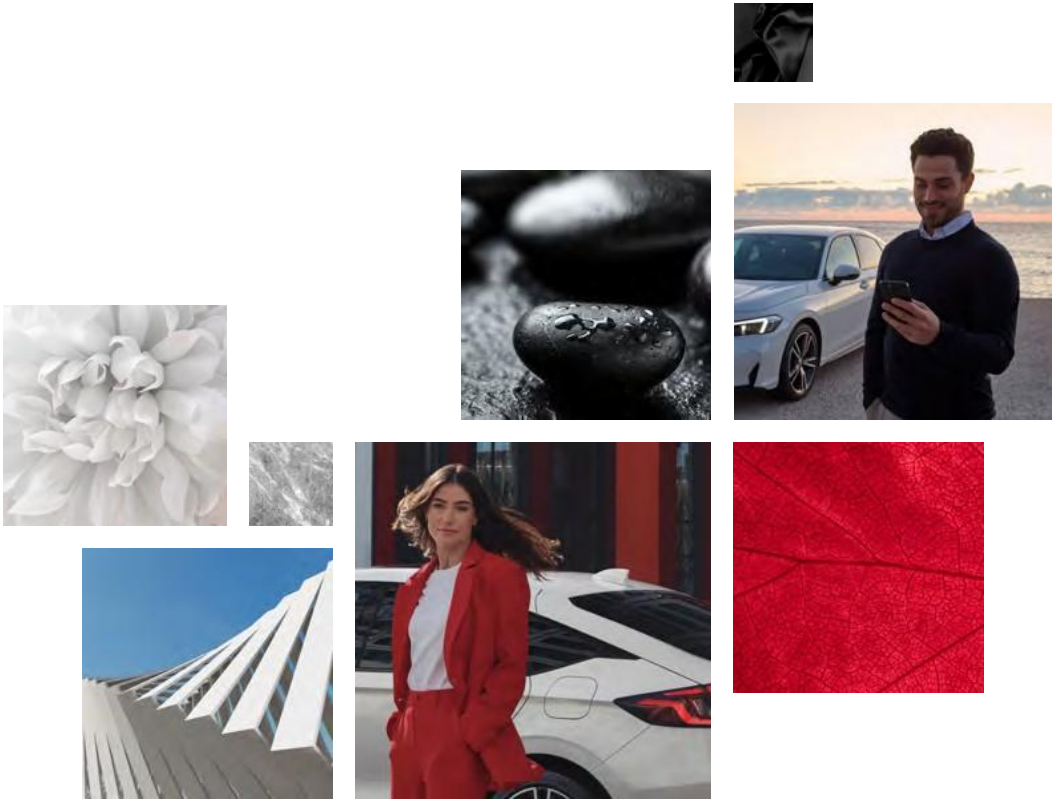
- Opening panoramic glass roof
- Adaptive Driving Beam





# Pick your colour

Choose from a range of colours that complement new Civic's dynamic design, while embracing your own personal style.



Platinum  
White Pearl

Premium Crystal  
Red Metallic

Crystal  
Black Pearl

Sonic  
Grey Pearl

Seabed  
Blue Pearl

Model shown is the Elegance grade.





# Upholstery

Civic's elegant style continues inside the cabin with a range of premium upholstery.

SPORT	ADVANCE
Combi leather and fabric	Genuine leather front centre, rear combi leather



COMBI LEATHER AND FABRIC



GENUINE LEATHER



# Sports accessories pack

This pack powers up the sporty look of your car with Berlina Black parts.

**This pack includes:** a lower grille decoration, a ducktail spoiler, side lower decorations, door mirror covers and dark chrome emblems (black Honda logos front and rear, Civic name and e:HEV badges).



**A LOWER GRILLE DECORATION**  
Inject more sportiness into your Civic with this shiny black lower grille decoration.



**A DUCKTAIL SPOILER**  
This sporty spoiler adds a distinctive edge to the rear boot lid of your car, for a dynamic rear view.



**SIDE LOWER DECORATIONS**  
These dynamic decorations enhance the exciting, sporty side profile.



**DOOR MIRROR COVERS**  
This kit includes 2 stylish, sporty door mirror covers.



**BLACK EMBLEM SET**  
This pack perfectly complements the sporty look of your car and includes: a black Honda logo kit (front and rear), a black Civic name badge and a black e:HEV emblem.



Items in the pack are also available separately. Alloy wheels are sold separately.  
Model shown is the Honda Civic 2.0 I-MMD Hybrid Advance in Platinum White Pearl with C11812 alloy wheels.



# Patina Bronze accessories pack

Lift your Civic's style with head-turning touches of bronze.

**This pack includes:** a lower grille decoration, a rear lower decoration, side lower decorations, headlight decorations and door mirror covers which all come in a Patina Bronze finish.



Items in the pack are also available separately. Alloy wheels are sold separately.  
Model shown is the Honda Civic 2.0 I-MMD Hybrid Advance in Platinum White Pearl with CI1811 alloy wheels.



**A LOWER GRILLE DECORATION**  
For a refined look, a ribbon of premium bronze runs under the front grille.



**DOOR MIRROR COVERS**  
A hint of bronze gives these covers a premium, personalised look.



**SIDE LOWER DECORATIONS**  
Adds an exciting, sporty dynamism to the car's side profile.



**A REAR LOWER DECORATION**  
The contrasting bumper diffuser introduces a dynamic and sporty accent to the rear.



**HEADLIGHT DECORATIONS**  
For stylish visual flair, each headlight has a halo of metallic bronze.



# Sports Extension accessories pack

These sporty Berlina Black accessories take the car's dynamic looks to the next level.

**This pack includes:** a front grille, rear bumper lower decoration and headlight decorations.



**A FRONT GRILLE**  
This shiny black addition transforms the front of your Civic with a striking new look.



**A REAR BUMPER LOWER DECORATION**  
The rear is transformed by the addition of a shiny Berlina Black diffuser.



**HEADLIGHT DECORATIONS**  
A pair of distinctive headlight decorations add flair and purpose to the car's front end.

Items in the pack are also available separately. Alloy wheels are sold separately.  
Model shown is the Honda Civic 2.0 I-MMD Hybrid Advance in Platinum White Pearl with CI1812 alloy wheels.

# Alloys

The Civic's alloys have been designed to enhance sportiness and complement your personal style.



**02**  
**18" CI1812 ALLOY**  
Diamond cut A-surface with a matte clearcoat and Rombo Silver windows.



**01**  
**18" CI1811 ALLOY**  
Diamond cut A-surface with a shiny clearcoat and Gunpowder Black windows.



**03**  
**18" CI1813 ALLOY**  
Full Paint Black finish with a shiny clearcoat.



	Sport	Advance
Engine		
Engine Type	e:HEV 2.0L	e:HEV 2.0L
Engine Name	E:HEV Intelligent Multi-Mode Drive	E:HEV Intelligent Multi-Mode Drive
Displacement (cc)	1993	1993
Bore X Stroke (mm)	81 x 96.7	81 x 96.7
Compression Ratio	13.9	13.9
Valve Train	4 VALVES	4 VALVES
Emission Standard	EURO–Euro6e BIS	EURO–Euro6e BIS
Fuel Required	Unleaded (95)	Unleaded (95)
Performance		
Engine Maximum Power (kW at rpm)	105kW @ 5900	105kW @ 5900
Engine Maximum Power (PS at rpm)	143 @ 5900	143 @ 5900
Engine Maximum Torque (NM at rpm)	186 @ 4500	186 @ 4500
Electric Motor Max Power(kW [PS])	135 (184)	135 (184)
Electric Motor Max Torque (Nm)	315	315
0 → 100 km/h (Seconds)	7.9	8.1
Max Speed (km/h)	180	180
Sound level: Drive-by (dB)	65	65
Fuel Economy and Emissions (WLTP)†		
Low – CO2 g/km	99	102
Medium – CO2 g/km	93	95
High – CO2 g/km	101	102
Extra High – CO2 g/km	140	141
Combined – CO2 g/km	113	114
Low – FC l/100km	4.4	4.5
Medium – FC l/100km	4.1	4.2
High – FC l/100km	4.5	4.5
Extra High – FC l/100km	6.2	6.2
Combined – FC l/100km	5.0	5.0

Key:  
♦Standard / – Not available

† Fuel consumption figures, sourced from EU regulated laboratory test results, are provided for comparison purposes and may not reflect real-life driving experience. The Honda Civic has been subjected to the new WLTP CO2 and fuel consumption testing cycle in accordance with Commission Regulation (EU) 2017/1151. WLTP figures better reflect the actual performance of the vehicle when driven on the road.

	Sport	Advance
Dimensions0		
Length (mm)	4560	4560
Width (mm)	1802	1802
Height – Unladen (mm)	1408	1408
Wheelbase (mm)	2734	2734
Track Front (mm)	1537	1537
Track Rear (mm)	1576	1576
Ground Clearance – with Driver (mm)	128	128
Ground Clearance – with Full Load (mm)	108.6	112.4
Turning Circle – at Body (m)	11.6	11.6
Turning Radius – at Wheel Centre (m)	6.0	6.0
Steering Wheel Lock to Lock (wheel turns)	2.2	2.2
Capacity		
Fuel Tank (Litres)	40	40
Seating Capacity (Persons)	5	5
Boot Capacity –Rear Seat up (litres, VDA method)	410	404
Boot Capacity – Rear Seat up (litres, VDA method) incl sub trunk/luggage floor box	415	409
Boot Capacity – Rear Seat Down Load to Roof (litres, VDA method)	1220	1187
Boot Capacity – Rear Seat Down Load to Window (litres, VDA method)	820	814
Weight		
Kerb Weight (kg)	1462	1503
Max. Permissible Weight (kg)	1930	1930
Payload (kg)	468	427
Max. Permissible Axle Weight – Front/Rear (kg)	1070 / 895	1070 / 895
Max. Towing Weight (kg) braked	750	750
Max. Towing Weight (kg) unbraked	600	600
Max Trailer Nose Weight (kg)	75	75
Max. Roof Load (kg)	65	65
Transmission		
Transmission Type	Automatic	Automatic
Security		
Immobiliser System	♦	♦
Remote Central Locking with 2 Key Fobs	♦	♦
Security Alarm System	♦	♦
Selectable Door Unlock	♦	♦
Smart Entry and Start	♦	♦
Tonneau Cover	♦	♦

	Sport	Advance
Safety		
ABS (Anti–Lock Braking System)	♦	♦
Airbags – Front Centre	♦	♦
Airbags – Front Driver and Passenger	♦	♦
Airbags – Driver’s Side Knee	♦	♦
Airbags – Passenger’s Side Knee	♦	♦
Airbags – Passenger SRS Airbag with Cut Off Switch	♦	♦
Airbags – Rear Side	♦	♦
Airbags – Side (Front)	♦	♦
Airbags – Side Curtain (Front and Rear)	♦	♦
Blind Spot Information incl. Cross Traffic Monitor	♦	♦
Brake Assist	♦	♦
Collision Mitigation Braking System	♦	♦
Collision Mitigation Throttle Control (RRandFR)	♦	♦
Deflation Warning System	♦	♦
eCall (Europe)	♦	♦
Electronic Brakeforce Distribution	♦	♦
Emergency Stop Signal	♦	♦
Forward Collision Warning	♦	♦
Front Seat Belts with Emergency Locking Retractor	♦	♦
Adjustable Speed limiter	♦	♦
Intelligent Speed limiter	♦	♦
ISO Fix Points / I-SIZE	♦	♦
Lane Departure Warning	♦	♦
Lane Keeping Assist System	♦	♦
Low Speed Following	♦	♦
Road Departure Mitigation	♦	♦
Pop-up Bonnet	♦	♦
Traffic Jam Assist	♦	♦
Traffic Sign Recognition System	♦	♦
Vehicle Stability Assist	♦	♦
Whiplash Lessening Front Headrests	♦	♦
Interior Lights		
Ambient Light (Roof)	♦	♦
Ambient Light (Door Line)	–	♦
Ambient Light (Footwell Front / Rear)	–	♦
Courtesy Light	♦	♦
Map Light (Front)	♦	♦
Meter Illumination	♦	♦
Sunvisor Vanity Mirror Illumination	♦	♦
Boot Light	♦	♦



	Sport	Advance
Comfort and Convenience		
Front and Cargo Accessory Sockets	◆	◆
Air Conditioning – Dual Zone Auto	◆	◆
Air Conditioning – Rear Vent	◆	◆
Auto Dimming Rear View Mirror	◆	◆
Auto Wipers	◆	◆
Cargo Net Hook	◆	◆
Cruise Control – Adaptive	◆	◆
Door Mirrors – Electrically Adjustable	◆	◆
Door Mirrors – Heated	◆	◆
Door Mirrors – Electrically Folding	◆	◆
Driver and Front Passenger Seat Armrest	◆	◆
Electric Windows Front and Rear	◆	◆
Front Seat – Driver Electrical Adjustment (8–way)	–	◆
Front Seat – Passenger electrical adjustment (4–way)	–	◆
Front Seat – Electric Lumbar Support (Driver)	◆	◆
Front Seat – Electric Lumbar Support (Passenger)	–	◆
Front Seat – Height Adjustment (Driver)	Manual	Electric
Front Seat Pockets	Passenger	Driver and Passenger
Heated Seats – Front	◆	◆
Heated Steering Wheel	◆	◆
Key Fob with Mirror and Window Operation	◆	◆
Parking Sensors (Front 4: Rear 4)	◆	◆
Rear Bench 60/40 Split	◆	◆
Rear Seat Centre Armrest	◆	◆
Rear View Camera	◆	◆
Sunvisor Vanity Mirrors	◆	◆
Sunglasses Box	–	◆
Tilt and Telescopic Steering Wheel	◆	◆
Interior Trims		
Platinum Chrome Interior Door Handles	◆	◆
Sports Pedals – Stainless Steel	◆	◆
Steering Wheel – Leather	◆	◆
Upholstery	Fabric / Synthetic Leather	Genuine Leather front centre, rear synthetic
Interior Panel (Dashboard / Door Garnish)	Piano black Dashboard & Door panel	Piano black Dashboard & Door panel
Exclusive Styling (location)	Honeycomb grille dashboard with Matte Chrome Air vents	Honeycomb grille dashboard with Matte Chrome Air vents

	Sport	Advance
Function and Technology		
Agile Handle Assist (AHA)	◆	◆
Drive Mode – ECON / SPORT / NORMAL / INDIVIDUAL	◆	◆
Electric Parking Brake with Automatic Brake Hold	◆	◆
Electric Power Steering – Motion Adaptive (MA–EPS)	◆	◆
Electric Power Steering – Variable Gear Ratio	◆	◆
Hill Start Assist (HSA)	◆	◆
Idle Stop / HEV Mode	◆	◆
Power Meter	◆	◆
10.2” Multi Info Display	◆	◆
Regenerative Braking / Deceleration Control (Paddle)	◆	◆
Wheels and Tyres		
Tyre Repair kit	◆	◆
18” Alloy Wheels	18" Matt Grey	18" diamond cut grey
235/40 ZR18 95Y	◆	◆
Audio and Communications		
Bluetooth™ Hands Free Telephone (HFT)	◆	◆
DAB Digital Radio	◆	◆
Honda CONNECT with Satellite Navigation (9” touchscreen, AM / FM / DAB, Apple CarPlay® and Android Auto™, live traffic info)*	◆	◆
Speakers	8 Speakers	12 Bose Speakers
Speakers – Front Tweeter	◆	◆
Speakers – Centre	–	◆
Subwoofer	–	◆
Steering Wheel Remote Audio Controls	◆	◆
USB Front x2	◆	◆
USB Rear x2	◆	◆
Wireless Apple CarPlay®	◆	◆
Wireless Charging	◆	◆

	Sport	Advance
Exterior		
Body Colour Shark Fin antenna	◆	◆
Body Colour Exterior Door Handle Finish	◆	◆
Mirror Colour	Gloss Black	Body Colour
E:HEV Emblem Blue	◆	◆
Panoramic Glass Roof	–	◆
Privacy Glass	◆	◆
Window Garnish	Low Gloss Black	High Gloss Black
Front Grille	Material Finish	Gloss Black
New Honeycomb Front grille with Headlight garnish in body colour	◆	◆
Exterior Lights		
Adaptive Driving Beam	–	◆
Headlight Extension Colour	Black	Aluminium
Active Cornering Lights	–	◆
Auto Headlight Adjuster	◆	◆
Auto Headlights	◆	◆
LED Daytime Running Light	◆	◆
LED Front Fog Lights	◆	◆
Headlight Auto On/Off Timer (Coming Home / Leaving Home Function)	◆	◆
LED Headlight	◆	◆
High Beam Support System	◆	◆
LED Rear Lights	◆	◆
Front Indicator LED lights	◆	◆

\*Apple CarPlay® features, applications and services may not be available in all areas and are subject to change. To use Android Auto™, you need to download the Android Auto™ app from Google Play™ to your smartphone. Android Auto™ availability is subject to change and may vary based on geographical location.

Apple CarPlay® is a trademark of Apple Inc., registered in the U.S. and other countries.



Let's  
drive







The colours and photographs illustrated can be affected by many factors including technical settings and the printing process and are therefore for guidance only and may differ from a real life environment.

IMPORTANT NOTICE: Honda Ireland endeavours to keep all pricing and specification up to date however final orders and products offered for sale may differ from those described or indicated in this document due to subsequent changes in specifications and / or component & supply constraints. The contents and descriptions are therefore to be treated as representations as to the current availability of products as described, or as to products actually offered for sale. Honda Ireland, a trading name of Gowan Motor Distribution Ltd. reserve the right to make changes at any time, without notice, to prices, colours, materials, equipment, specification and versions and also to discontinue models. All details correct at time of going to print. Please consult your preferred Honda Dealer for the most up to date information. This price / specification list is not a contractual document or offer of sale.

Price excludes dealer delivery and related charges.

Please consult your preferred Honda Dealer for further information relating to these supports.

Honda.ie



Honda sources paper responsibly from manufacturers within the EU.  
Please don't bin me, pass me onto a friend or recycle me.

**HONDA**